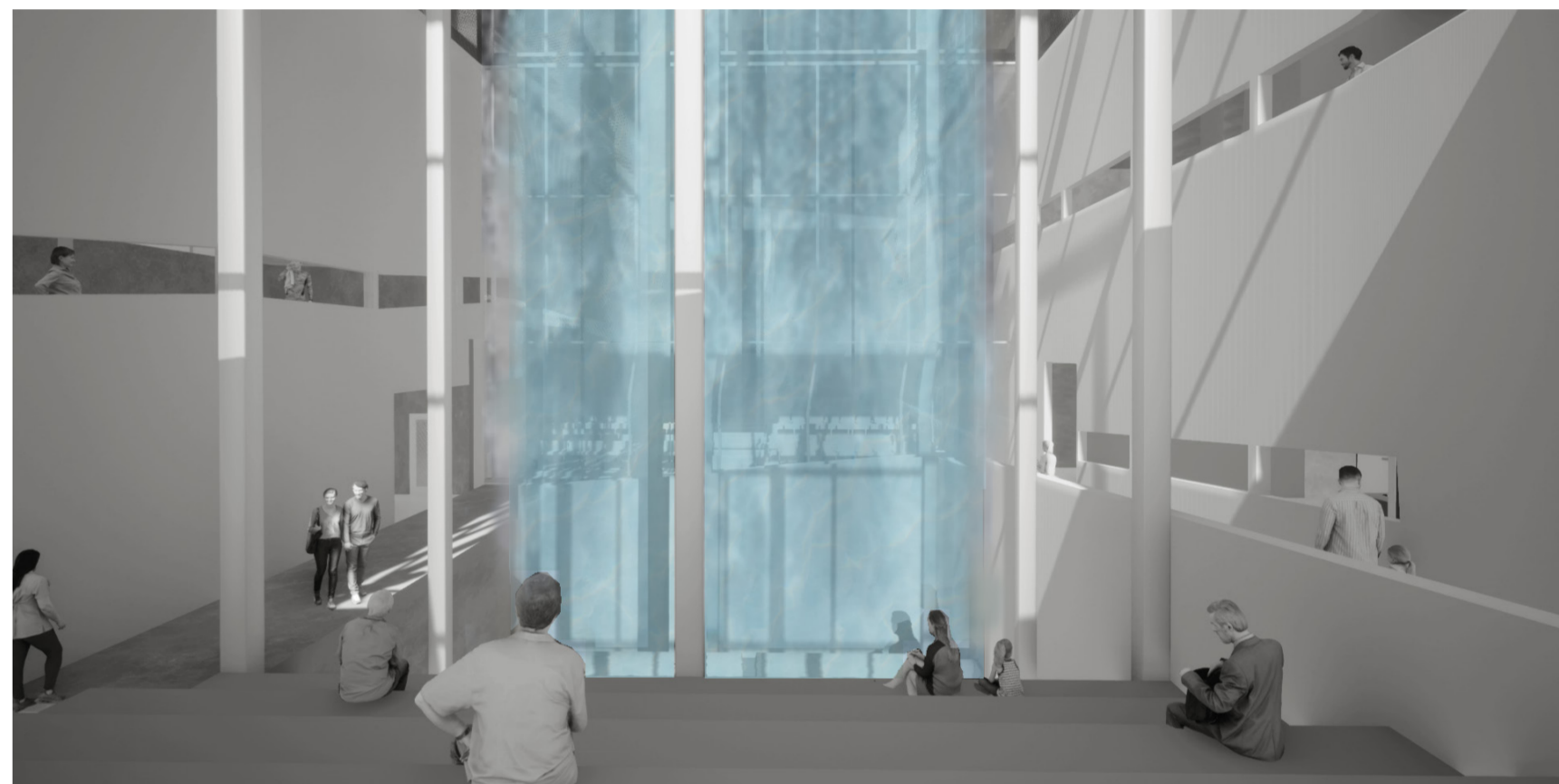


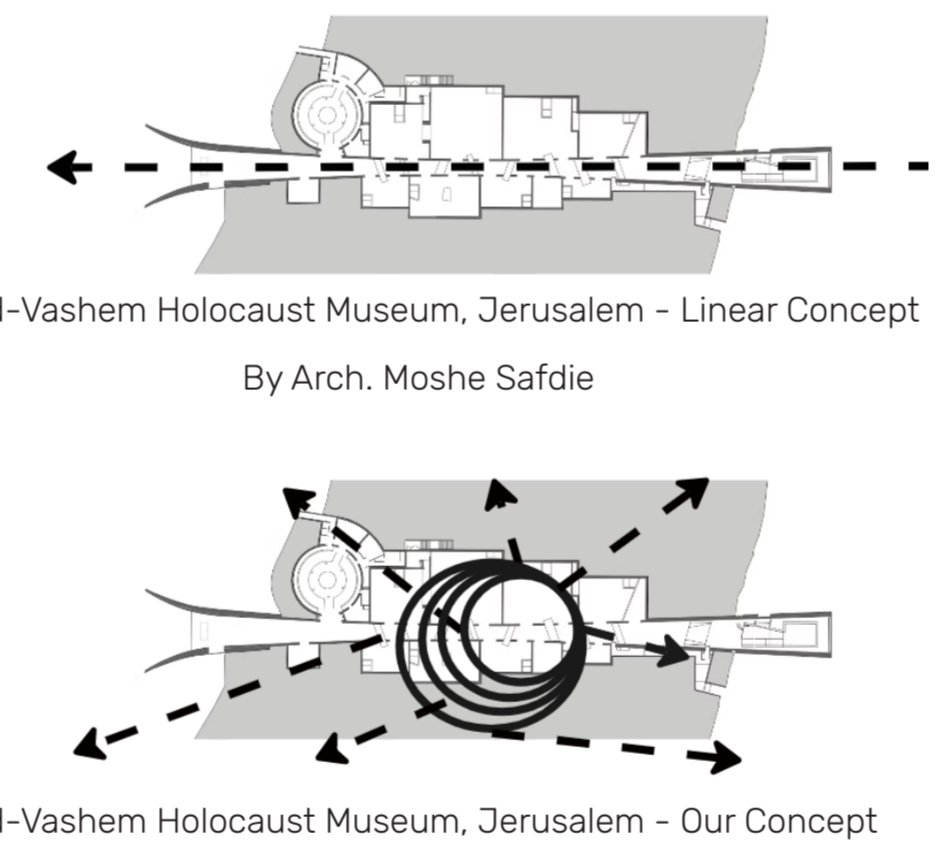
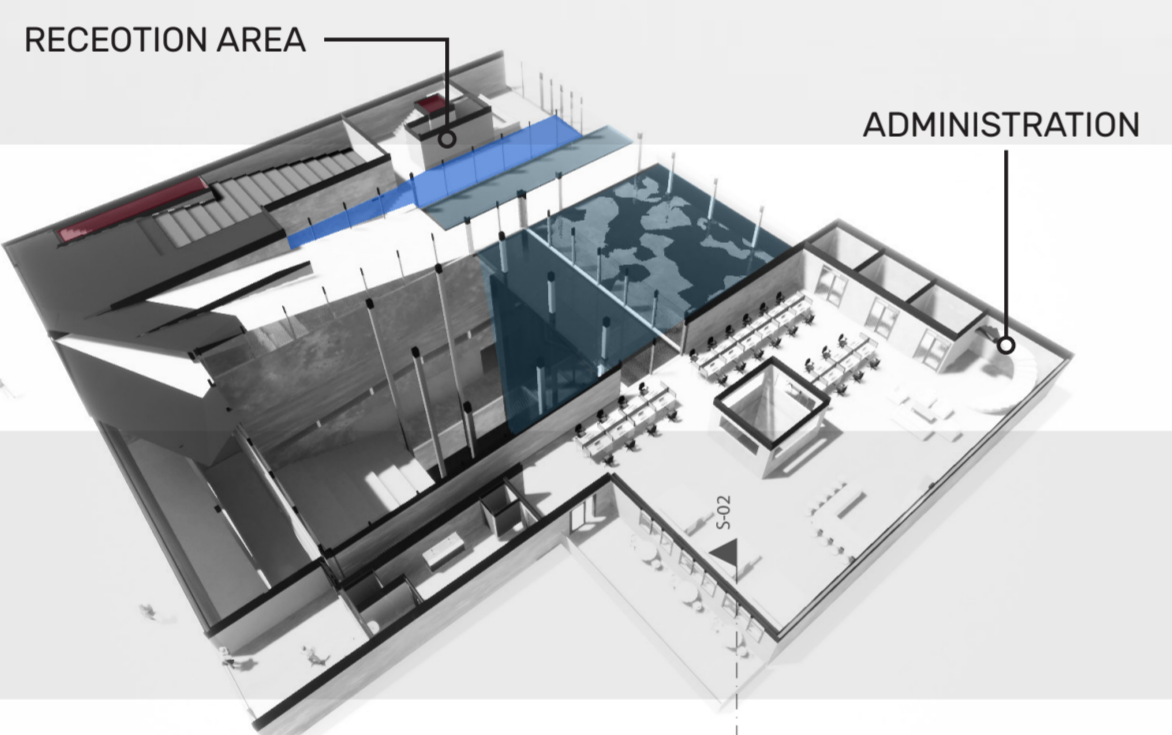
CONCEPT & BUILDING SCHEME



'AGORA' SPACE

The 'Agora' space is the switching point between the two circulation systems, function as a 'reflective' place for processing the experience in front of the waterfall that falls into a black pit, which symbolize the power and infinity of holocaust events.

- 1 - Reception Area
- 2 - Workspaces
- 3 - Lounge and Lunch Area
- 4 - Conservation and Collection Management
- 5 - Storage
- 6 - Toilets
- 7 - Hologram Room



The design concept for the holocaust museum has been based on the question --

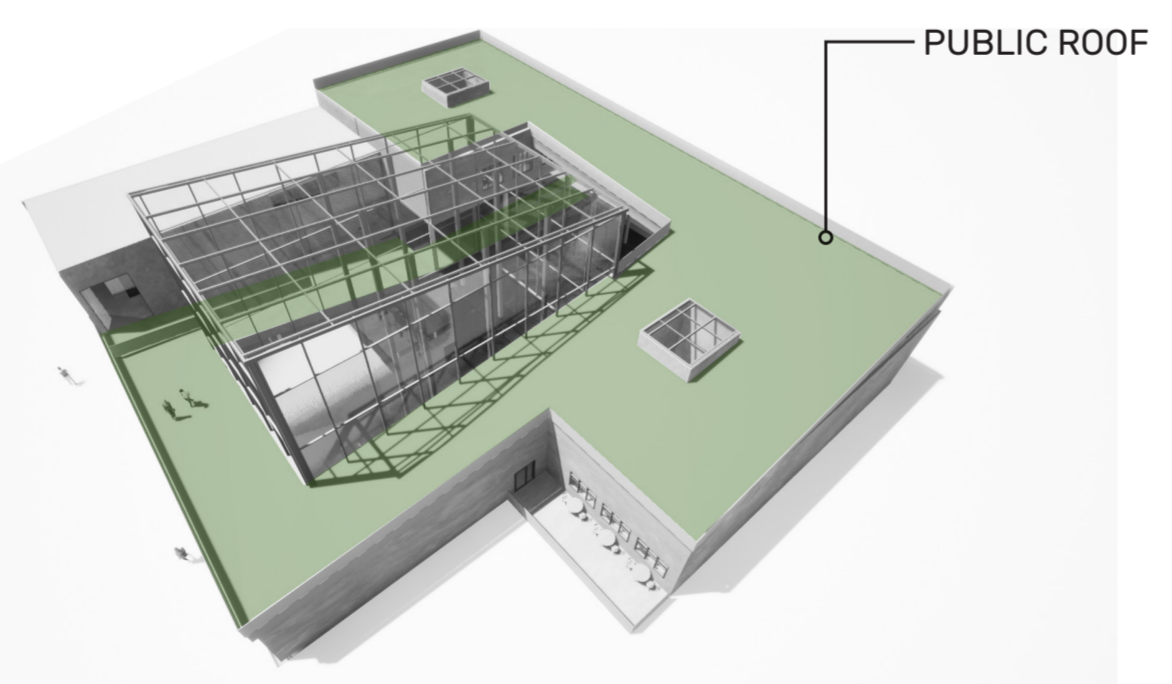
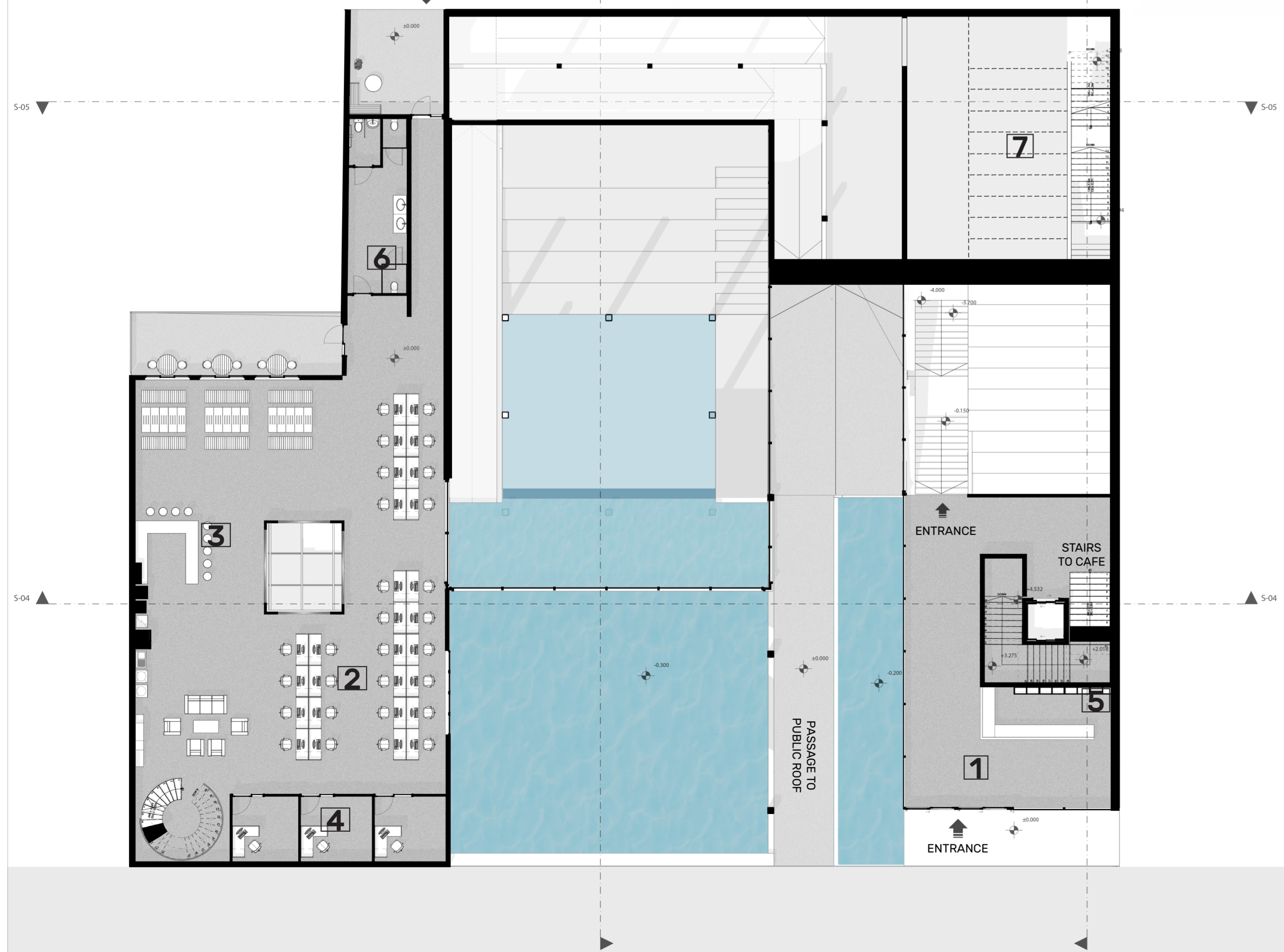
How can a building whose programmatic essence brings the story of a different culture, can be made accessible to the local culture?

Therefore, our goal was to bridge between the **global** meaning of the building to the **local** context.



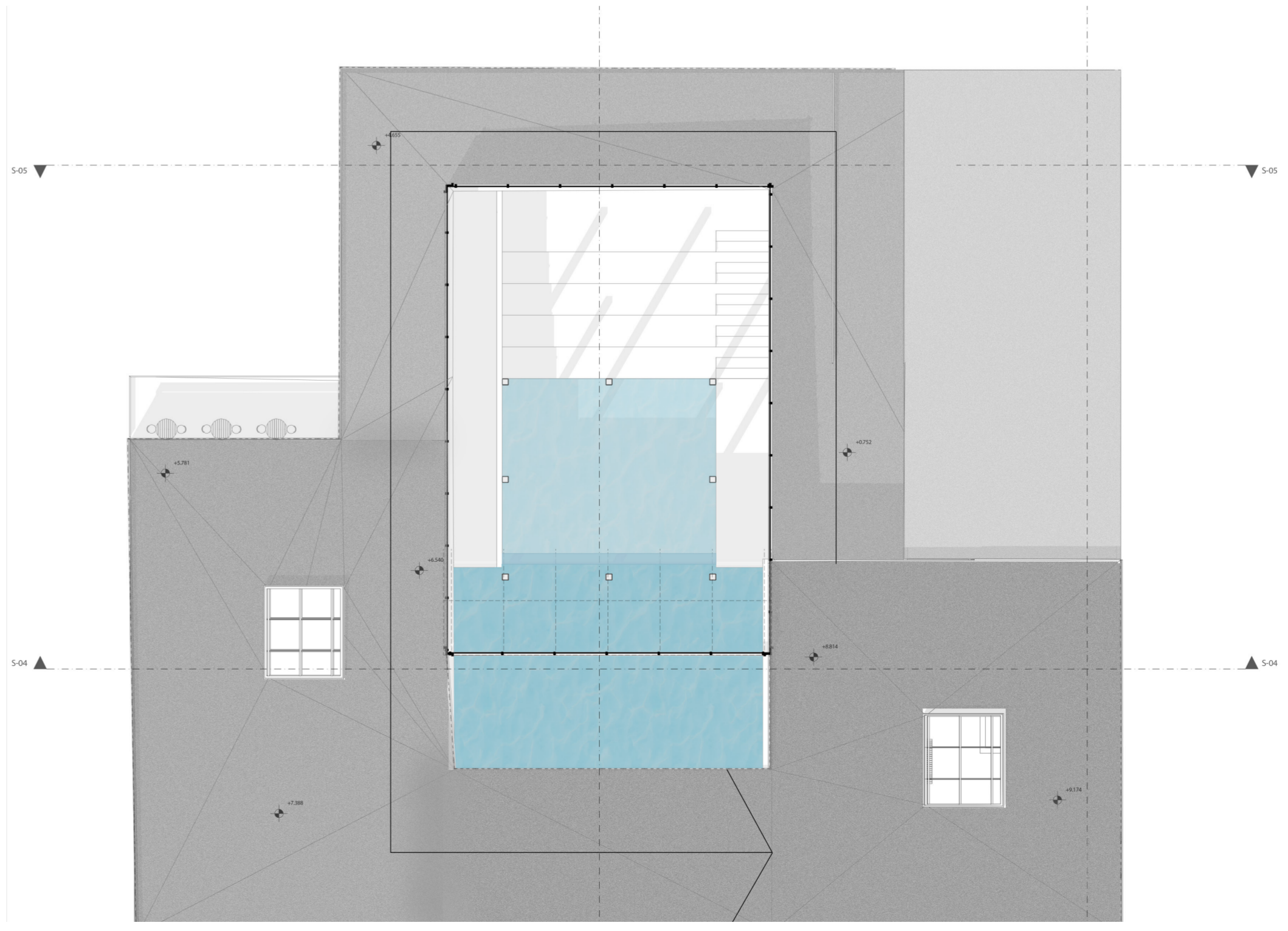
EXIT FROM EXHIBITIONS

The exit area is the hologram space on which is linked to the outside ramp which from one side - goes back to st. laurent St. and from the other side continue to the building's roof and its public space.



ENTRANCE TO EXHIBITIONS

The entrance to the building is through water pool and down, like a diving experience into a different world.



ROOF PLAN | 1:200



VIEW TO AUDITORIUM FROM 2ND FLOOR RAMP

The building is concentric and has an 'Agora' in its center, where the water of the pool falling to. This space is an orientation point for the user that wander inside the building, and it enables different perspectives through it.